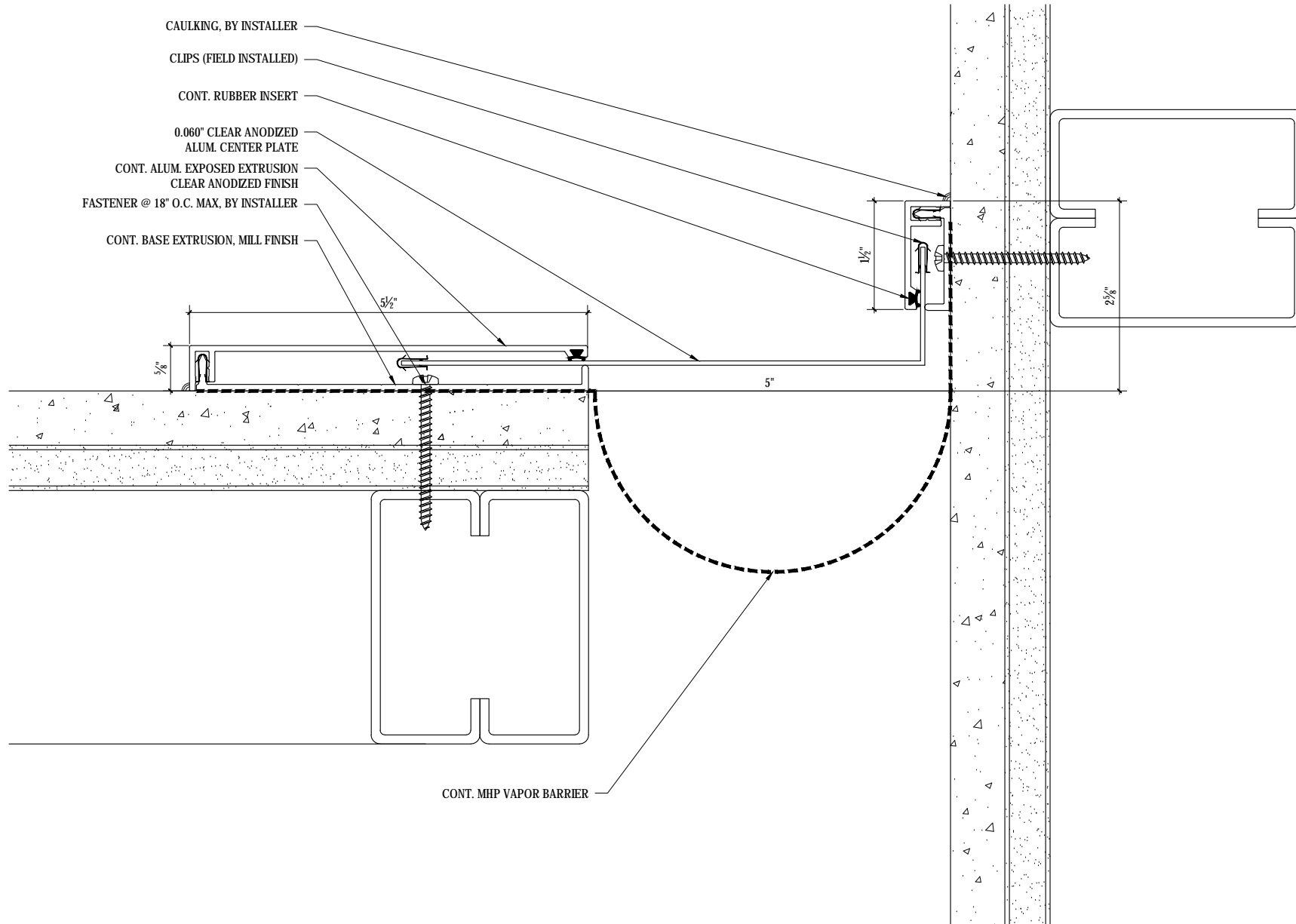


- CAULKING, BY INSTALLER
- CLIPS (FIELD INSTALLED)
- CONT. RUBBER INSERT
- 0.060" CLEAR ANODIZED ALUM. CENTER PLATE
- CONT. ALUM. EXPOSED EXTRUSION CLEAR ANODIZED FINISH
- FASTENER @ 18" O.C. MAX, BY INSTALLER
- CONT. BASE EXTRUSION, MILL FINISH



SCALE: 6"=1'-0"



M.H. POWELL & CO., INC.
ARCHITECTURAL SEISMIC EXPANSION JOINT SYSTEMS

2313 YATES AVENUE | PHONE : (323) 887-0037
 COMMERCE, CA 90040 | FAX : (323) 887-0877
 WEB : www.mhpowell.net

MODEL
KF-5-2.5
WALL/CEILING CORNER EJC

PROJECT :		PROJECT # :	
LOCATION :		DATE :	
ARCHITECT :			
CUSTOMER :			

PAGE #